

BALDOR® • RELIANCE 

Product Information Packet

SUM21504-4

15HP,1800RPM,3PH,60HZ,210TY,TENV,FOOTLE

Part Detail							
Revision:	-	Status:	PRD/A	Change #:		Proprietary:	No
Type:	AC	Elec. Spec:	E02744A A 007	CD Diagram:	416820-002	Mfg Plant:	
Mech. Spec:		Layout:	066930-502	Poles:	04	Created Date:	04-09-2015
Base:		Eff. Date:	04-13-2015	Leads:			

Specs			
Catalog Number:	SUM21504-4		
Enclosure:	TENV		
Frame:	210TY		
Frame Material:	Iron		
Output @ Frequency:	15.000 @ 60 HZ		
Voltage @ Frequency:	230 V @ 60 HZ		
	460 V @ 60 HZ		
XP Class and Group:	None		
XP Division:	Not Applicable		
Agency Approvals:	CCSA US		
	CE		
	WEEE		
Base Indicator:	No Mounting		
Bearing Grease Type:	Polyrex EM (-20F +300F)		
Current @ Voltage:	20.1 A @ 460 V		
	40.2 A @ 230 V		
Design Code:	B		
Drip Cover:	No Drip Cover		

Duty Rating:	15 MIN		
Heater Indicator:	No Heater		
Insulation Class:	F		
Inverter Code:	Inverter Ready		
KVA Code:	G		
Lifting Lugs:	Vertical Lifting Lugs		
Motor Type:	M		
Mounting Arrangement:	V1		
Product Family:	Other		
Pulley End Bearing Type:	Ball		
Pulley Face Code:	D-Flange		
Shaft Rotation:	Reversible		
Shaft Slinger Indicator:	No Slinger		
Speed Code:	Single Speed		
Motor Standards:	NEMA		
Starting Method:	Direct on line		
Thermal Device - Winding:	Normally Closed Thermostat		

Nameplate 000613006SC

KG 178

Nameplate 000613007MN										
CAT NO	SUM21504-4	SPEC NO.	P21G2757							
HP	15	AMPS	40.2/20.1		VOLTS	230/ 460		DESIGN	B	
FRAME SIZE	00210TY	RPM	1745		HZ	60	AMB	40	SF	1.15
D.E. BRG.	60BC02JPP30A		PH	3	DUTY	*		INSUL	F	
O.D.E. BRG.	30BC02JPG30A		TYPE	P	ENCL	TENV		CODE	G	
			POWER FACTOR		NEMA-NOM-EFF					
			MAX CORR KVAR		GUARANTEED EFFICIENCY					
					NEMA NOM/CSA QUOTED EFF @	100% LOAD				
SER.NO.					MOTOR WEIGHT	392	LBS.			
	SUB. IN WATER ONLY; MAX									
	DEPTH- REFER TO INSTR MANUAL									
	*15 MIN IN AIR FINAL CONN AT									

Nameplate 000613007MR									
CAT NO	SUM21504-4			SPEC NO.	P21G2757				
HP	15	AMPS	40.2/20.1		VOLTS	230/ 460		DESIGN	B
FRAME SIZE	00210TY	RPM	1745		HZ	60	AMB	40	
D.E. BRG.	60BC02JPP30A			PH	3		DUTY	*	
O.D.E. BRG.	30BC02JPG30A			TYPE	P		ENCL	TENV	
				POWER FACTOR			NEMA-NOM-EFF		
				MAX CORR KVAR			GUARANTEED EFFICIENCY		
					NEMA NOM/CSA QUOTED EFF @		100% LOAD		
SER.NO.				MOTOR WEIGHT	392		LBS.		
	SUB. IN WATER ONLY; MAX								
	DEPTH- REFER TO INSTR MANUAL								
	*15 MIN IN AIR FINAL CONN AT								

Parts List		
Part Number	Description	Quantity
SA297393	SA P21G2757	1.000 EA
RA284357	RA P21G2757	1.000 EA
000613006SC	N/P CERTIFICATION	1.000 EA
000613007MN	NP,MEDIUM AC,NO CERT,STD INDUSTRIAL	1.000 EA
000613007MR	NP, MEDIUM AC, CSA, STD INDUSTRIAL	1.000 EA
000692000EJ	NAME PLATE	1.000 EA
000692000RY	NAME PLATE	1.000 EA
000901001AA	LABEL WARNING	1.000 EA
001575000B	WIRING DIAGRAM	1.000 EA
424476003WA	WIRING DIAGRAM MEDIUMA	1.000 EA
034692002AE	HCSPP 1/4" 304 S.S.	1.000 EA
004824015A	GREASE POLYREX EM	0.100 LB
032018012DG	HHCS 1/2-13X1-1/2 316S.S	4.000 EA
032130010DC	HSHCS 1/2-13X1-1/4 304SS	4.000 EA
034692003AE	PPLG 3/8" 304 S.S.	2.000 EA
047174005C	SNAP RING	1.000 EA
047174005D	SNAP RING	1.000 EA
064262012C	SEAL	1.000 EA
064262012D	SEAL	1.000 EA
088207001AA	BRKT,DE,210SUB 88207-1WA	1.000 EA
088208001AA	MTG PLATE EX210Y SUBMERSIBLE 088208001WB	1.000 EA
413412004A	SUBM MOISTURE PROBE	2.000 EA
413412005S	LEAD WIRE ASSY(BLANKET	1.000 EA
413480001R	RESISTOR ASSEMBLY-BLANKET	1.000 EA

Parts List (continued)		
Part Number	Description	Quantity
421900144FU	ORING	1.000 EA
421900144FU	ORING	1.000 EA
032018006BM	HHCS 5/16-18X3/4 PLTGRN.	1.000 EA
032018006BM	HHCS 5/16-18X3/4 PLTGRN.	1.000 EA
032018010CG	HHCS 3/8-16X1-1/4L 316SS V2T23	4.000 EA
032080003JB	HWHMS 10-24X3/8L PLTED	4.000 EA
032080003LB	HWHMS 1/4-20X3/8L PLTED	6.000 EA
034036013AB	LCKW 5/16 EXT.TOOTH LCKW	1.000 EA
047024003AH	T/LUG AMP 34112	4.000 EA
047024003B	T/LUG AMP 33218	6.000 EA
047024003E	TERMINAL LUG	3.000 EA
415031017A	NUT W/WASHER 10-24 C.PLT	4.000 EA
415031017B	NUT W/WASHER1/4-20 C.P	6.000 EA
421900092FU	ORING	1.000 EA
609181014D	HEAT SHRINK TUBING 3/4	10.000 EA
700385014N	CCA #6 25' 210/250	1.000 EA
004824007K	SPECIAL PAINT	0.100 EA
033775004EA	DRSCR #6-1/4 304 S.S.	4.000 EA
034180009FD	KEY 3/8X3/8X1-1/8 303 SS	1.000 EA
088206001AB	BRKT,ODE,210SUB 88206-1WB	1.000 EA
421900144FU	ORING	1.000 EA
004824018AF	SHELL ROTELLA OIL 10W	2.500 LB
032018008BG	HHCS 5/16-18X1 BRASS-447	3.000 EA
032018012DG	HHCS 1/2-13X1-1/2 316S.S	4.000 EA

000901001AA	LABEL WARNING	1.000 EA
-------------	---------------	----------

REL. S.O.	FRAME	HP	TYPE	PHASE/HERTZ	RPM	VOLTS
S1200208244	210TY	15	P	3/60	1745	230/460
AMPS	DUTY	AMB °C/ INSUL.	S.F.	NEMA DESIGN	CODE LETTER	ENCL.
40.2/20.1	CONT	40/F	1.15	B	G	TENV
E/S	ROTOR	TEST S.O.	TEST DATE	STATOR RES @25 °C (BETWEEN LINES)		
534872	418425040EE	---	---	.237/.948		

PERFORMANCE

LOAD	HP	AMPERES	RPM	INPUT KW	POWER FACTOR	% EFFICIENCY
NO LOAD	0	8.0	1800	.878	13.8	0
1/4	3.75	9.5	1787	3.74	49.6	74.8
2/4	7.50	12.2	1775	6.72	69.2	83.3
3/4	11.3	15.8	1762	9.83	77.9	85.4
4/4	15.0	20.1	1747	13.1	82.0	85.4
5/4	18.7	24.8	1730	16.6	83.9	84.4

SPEED TORQUE

	RPM	TORQUE % FULL LOAD	TORQUE LB.-FT.	AMPERES
LOCKED ROTOR	0	184	83.0	114
PULL UP	400	157	71.0	109
BREKDOWN	1522	250	113	65.6
FULL LOAD	1747	100	45.1	20.1

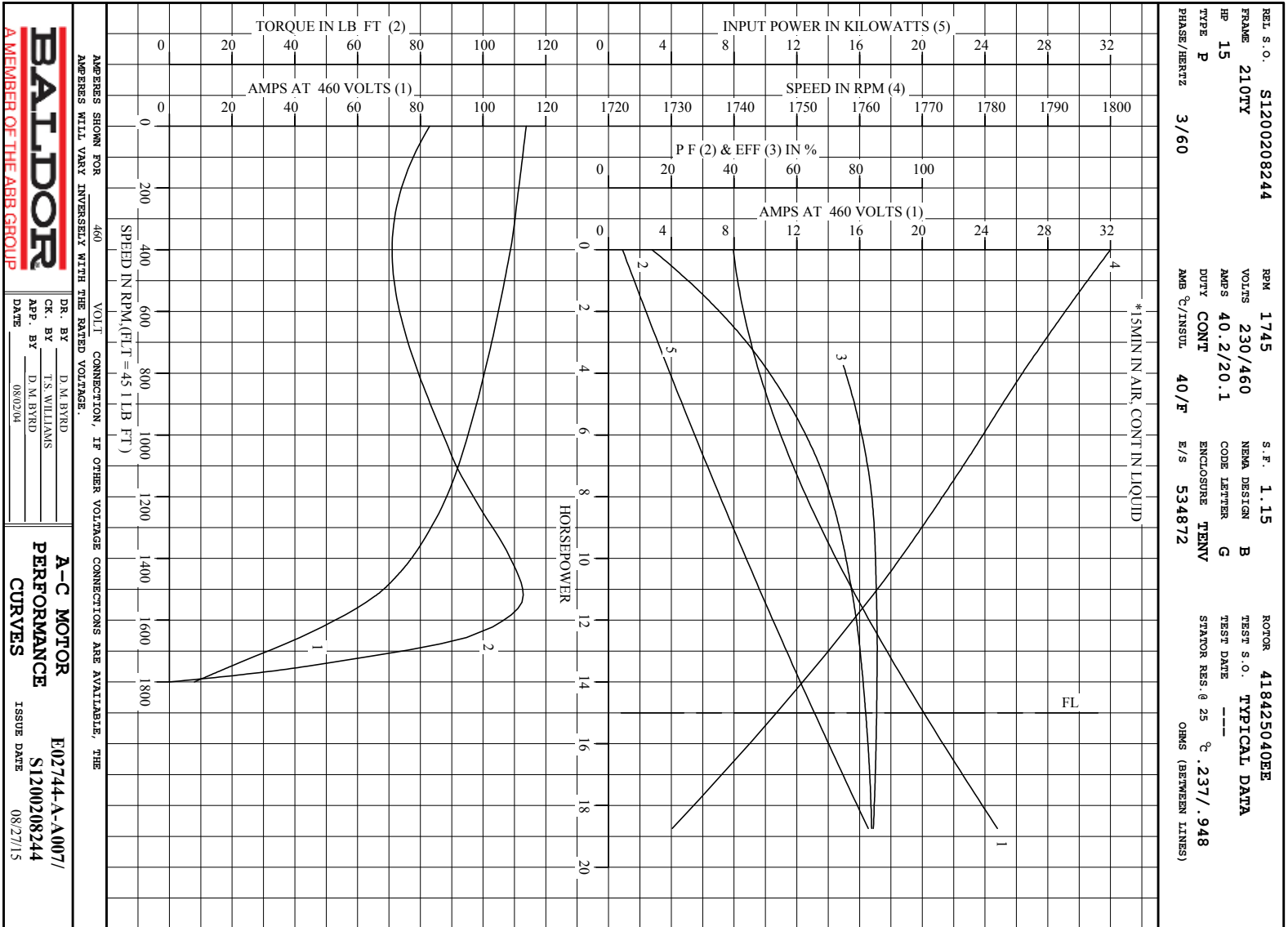
AMPERES SHOWN FOR 460. VOLT CONNECTION. IF OTHER VOLTAGE CONNECTIONS ARE AVAILABLE, THE AMPERES WILL VARY INVERSELY WITH THE RATED VOLTAGE

REMARKS: TYPICAL DATA
*15MIN IN AIR, CONT IN LIQUID



DR. BY D. M. BYRD
CR. BY T. S. WILLIAMS
APP. BY D. M. BYRD
DATE 08/02/04

A-C MOTOR E02744-A-A007/
PERFORMANCE S1200208244
DATA ISSUE DATE 08/27/15



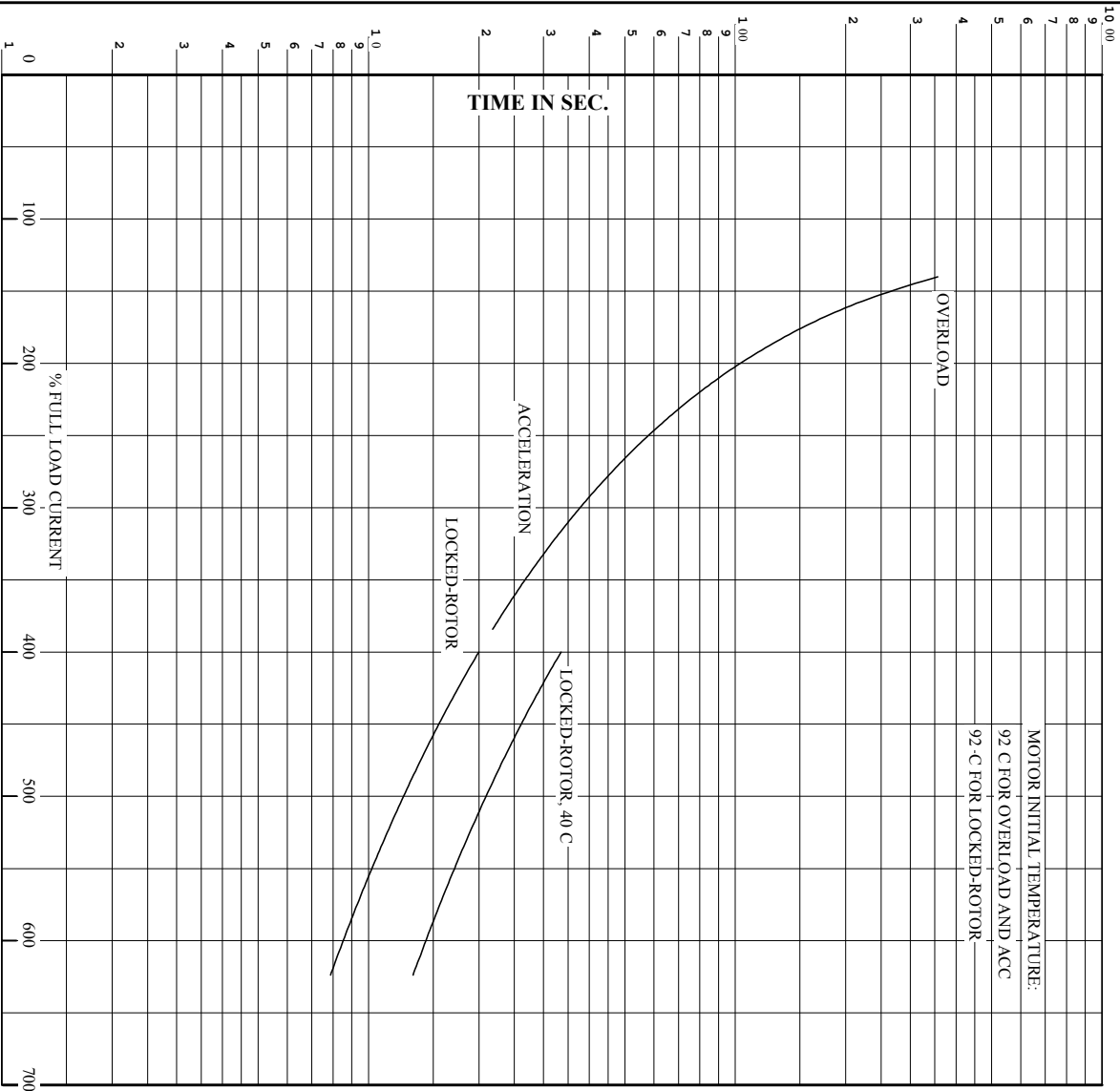
AMPERES SHOWN FOR 460 VOLT CONNECTION, IF OTHER VOLTAGE CONNECTIONS ARE AVAILABLE, THE AMPERES WILL VARY INVERSELY WITH THE RATED VOLTAGE.

BALDOR	DR. BY D.M. BYRD
A MEMBER OF THE ABB GROUP	CR. BY T.S. WILLIAMS
	APP. BY D.M. BYRD
	DATE 08/20/04

A-C MOTOR PERFORMANCE CURVES	E02744-A-A007/
	S1200208244
	ISSUE DATE 08/27/15

Printed on 8/27/15 14:56 @ bengap01.baldor.com

REL. S.O. S1200208244 RPM 1745 S.F. 1.15 ROTOR 418425040EE
 FRAME 210TY VOLTS 230/460 NEMA DESIGN B TEST S.O. TYPICAL DATA
 HP 15 AMPS 40.2/20.1 CODE LETTER G TEST DATE ---
 TYPE P DUTY CONT 40/F ENCLOSURE TENV SPATOR RES. @ 25 °. 237/. 948
 PHASE/HERTZ 3/60 AMB °/INSUL E/S 534872 OHMS (BETWEEN LINES)



REMARKS: THERMAL LIMIT CURVE
 *15MIN IN AIR, CONT IN LIQUID

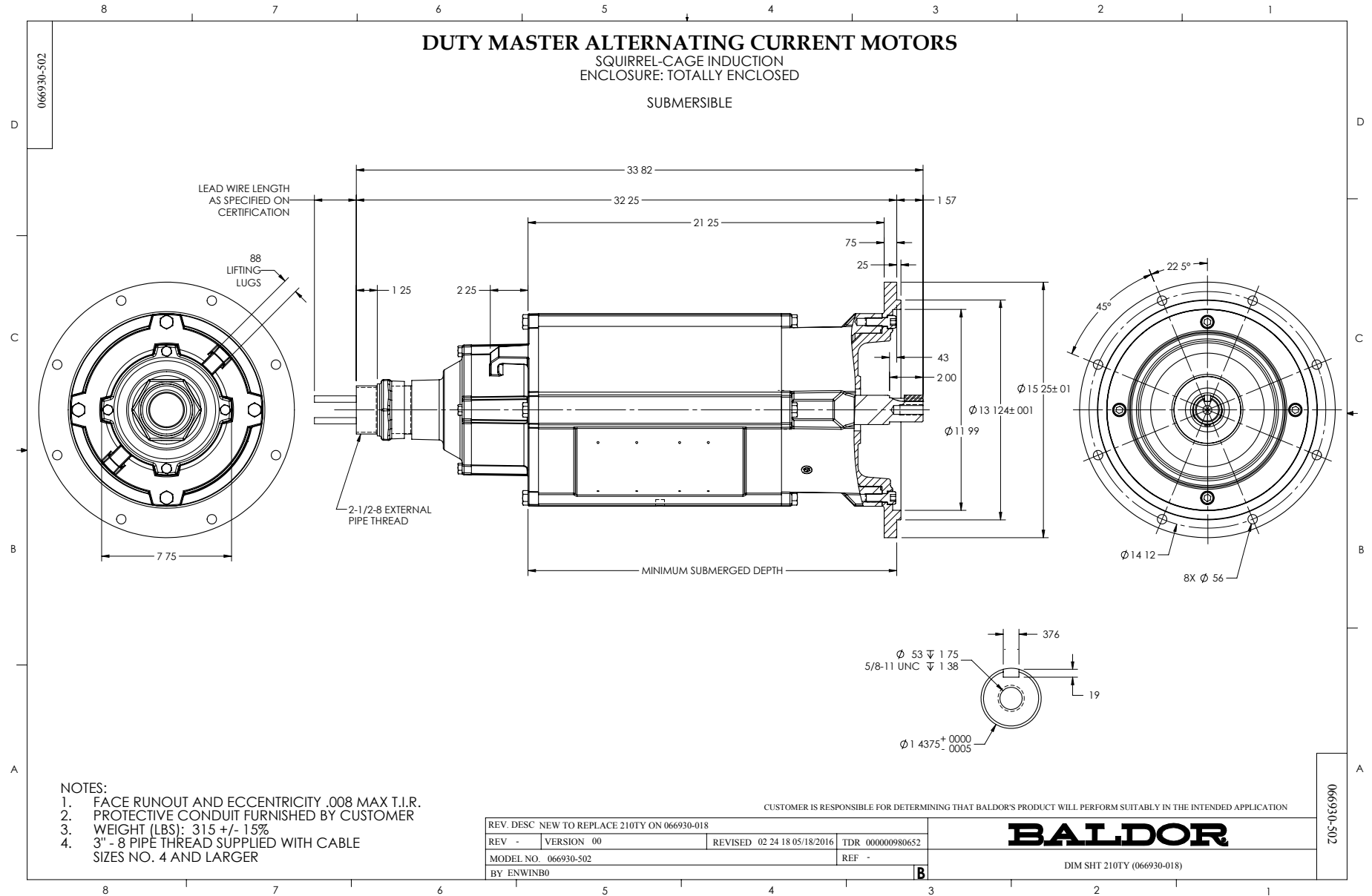
AMPERES SHOWN FOR 460 VOLT CONNECTION, IF OTHER VOLTAGE CONNECTIONS ARE AVAILABLE, THE AMPERES WILL VARY INVERSELY WITH THE RATED VOLTAGE.



DR. BY D.M.BYRD
 CK. BY T.S.WILLIAMS
 APP. BY D.M.BYRD
 DATE 08/27/15

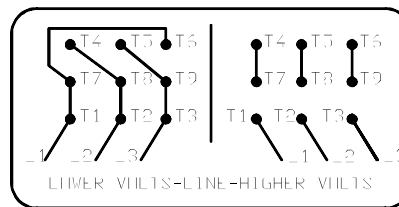
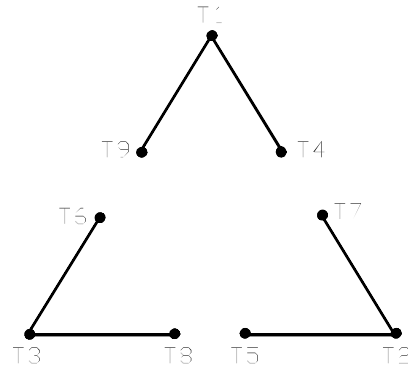
A-C MOTOR PERFORMANCE CURVES

E02744-A-A007/
 S1200208244
 ISSUE DATE 08/27/15



416820-002

A-C MFTFR
 CONNECTION DIAGRAM
 STANDARD 9 LEAD DELTA-CONNECTED



(N.P. 1575-B)

416820-002

REV. DESC: FONT CHANGE FOR PDF SEARCHABLE		
REV. LTR: A	VERSION: 01	TDR: 000001009382
FILE: \MGA\00000\661	REVISED: 02:46:19 02/13/2020	BY: MGHMTT
MTL: -	⊙ □	

BALDOR - RELIANCE®

CONN DIAG - STANDARD 9 LEAD, DELTA-CONNECTED

SH 1 of 1